

Support Request: Port Alberni's Adventure Sport Park



Alberni Valley Skatepark Association

BMX PA premiere.
SK8 PA west coast.
MTB PA adventure sport.
skills park.



© The Vision

A new regional scope, all-ages skill development park for the 'adventure sports' of skateboarding, BMX, scooter-ing and mountain biking, situated in the Echo Park area of Port Alberni.



Mountain
biking



Skateboarding



BMX



Scooter-ing

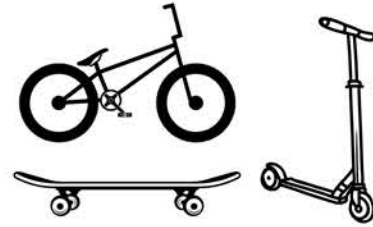


Proponents

COMMUNITY FUTURES (principle)

ALBERNI VALLEY SKATEPARK ASSOCIATION

- Est. 2013



RIDERS OF THE ALBERNI VALLEY (ROAV)

- NFP org , est. 2017



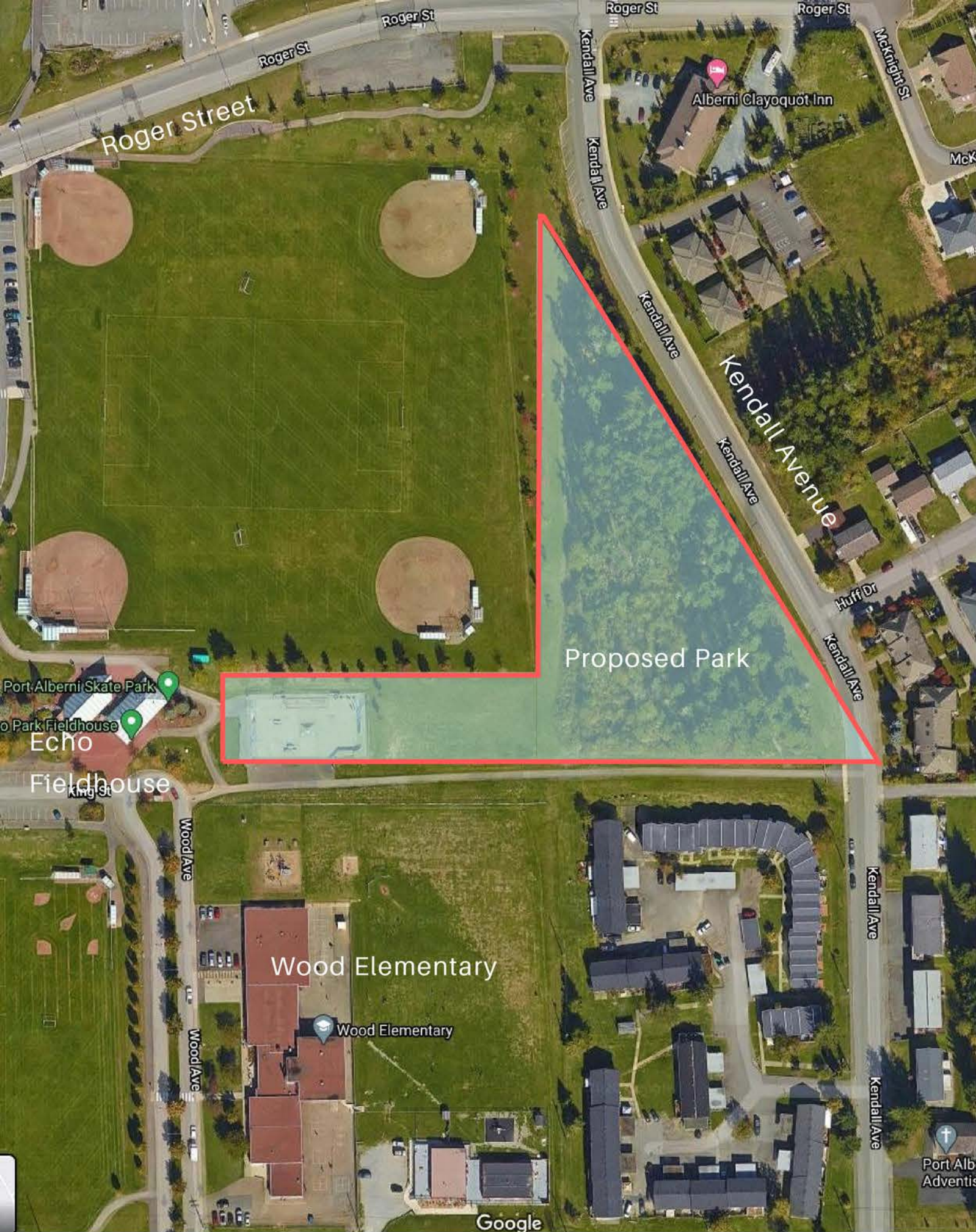
Working in communication with the City's Parks, Recreation & Heritage and Economic Development offices





8 Letters of Support Received

- Alberni Valley Chamber of Commerce
- Arrowsmith Rotary
- Cycle Alberni
- Hupačasath First Nation
- North Island College
- Nuuchahnulth Economic Development Corporation
- School District #70
- Tseshaht First Nation



Location

1. Central
2. Already zoned for recreation (easy to be part of multiple sports)
3. Land not designated for a competing use
4. Does not interfere with/impact existing recreation infrastructure
5. Ample parking nearby, and close to transit stops
6. For younger children, a safe alternative to being in the forest
7. Close to trail system access points (Fairgrounds, hospital, NIC)
8. Close to washrooms, water fountain, kitchen (Echo Fieldhouse)
9. Ability to host sporting events
10. Preferred location as requested by user groups

Proposed Park Components



1. NEW ALL-WHEELS/SKATEBOARD PARK



- Replacing current park
- Plaza/street area, bowl and flow zone
- Covered area for year-round use
- Beginner Area

2. NEW ALL-WHEELS PUMP TRACK



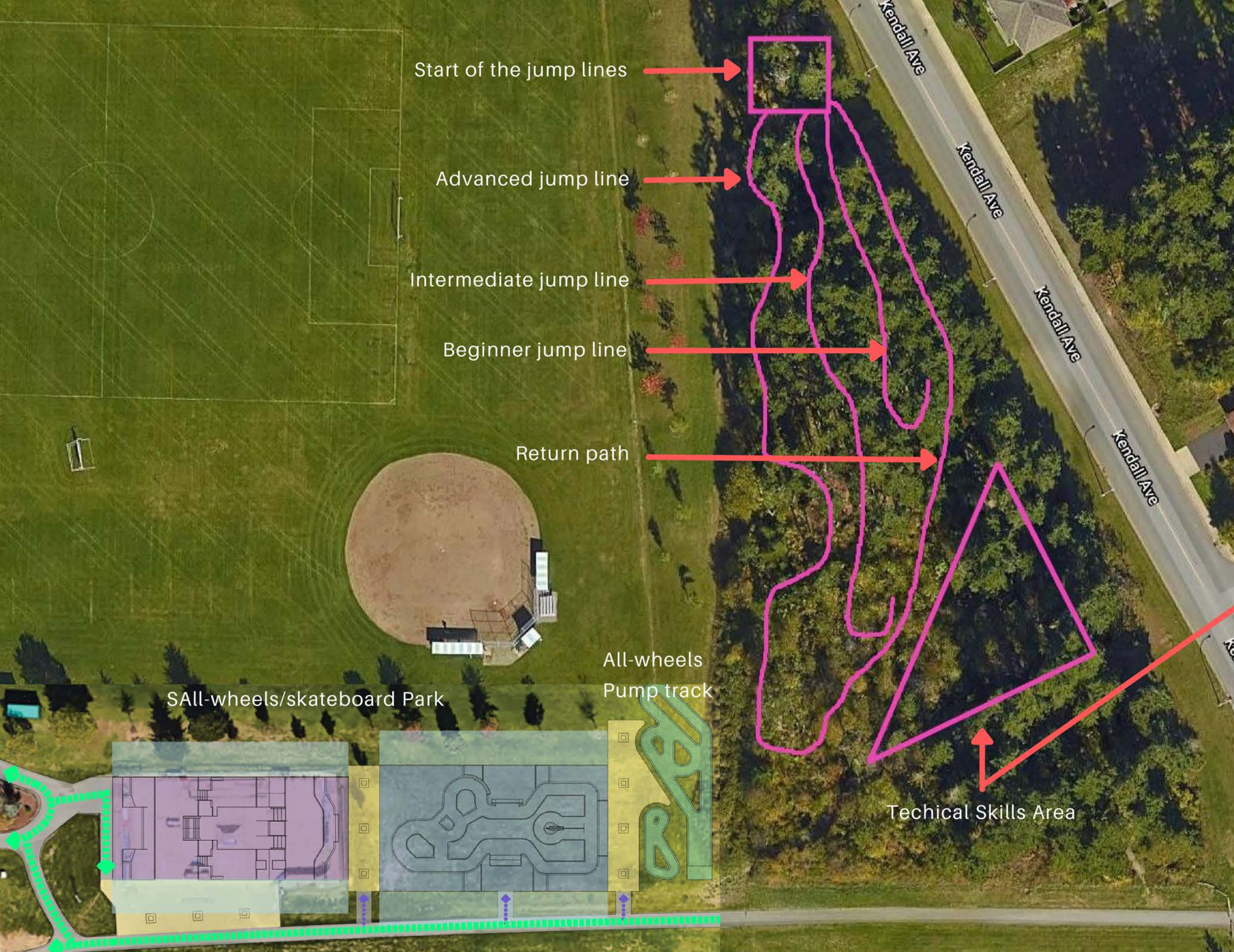
- Circuit of rollers and banked turns
- Easy to use, popular

3. MOUNTAIN BIKE SKILLS PARK & JUMP LINES



- 3 jump lines, beginner to advanced
- Technical skills area

MTB Proposed Site Details



Features for Techical Skills Area

Nanaimo Examples

"The family friendly bike park is a draw from a sports tourism point of view."

-Park and Open Space Planner, City of Nanaimo



Powell River Example

"I'm amazed at how many young families are there. The kids on the pump track just love it. It's a multigenerational family activity and gathering place."

"People travel up to ride the park."

"Look at the big picture of what this does for a town. It's creating a different culture."

--Manager of Recreation, City of Powell River



Cumberland Example

"It's been an exceptionally well-used amenity by a broad range of users. There's been a positive community response for its use and value"

-Parks & Recreation Coordinator, Village of Cumberland

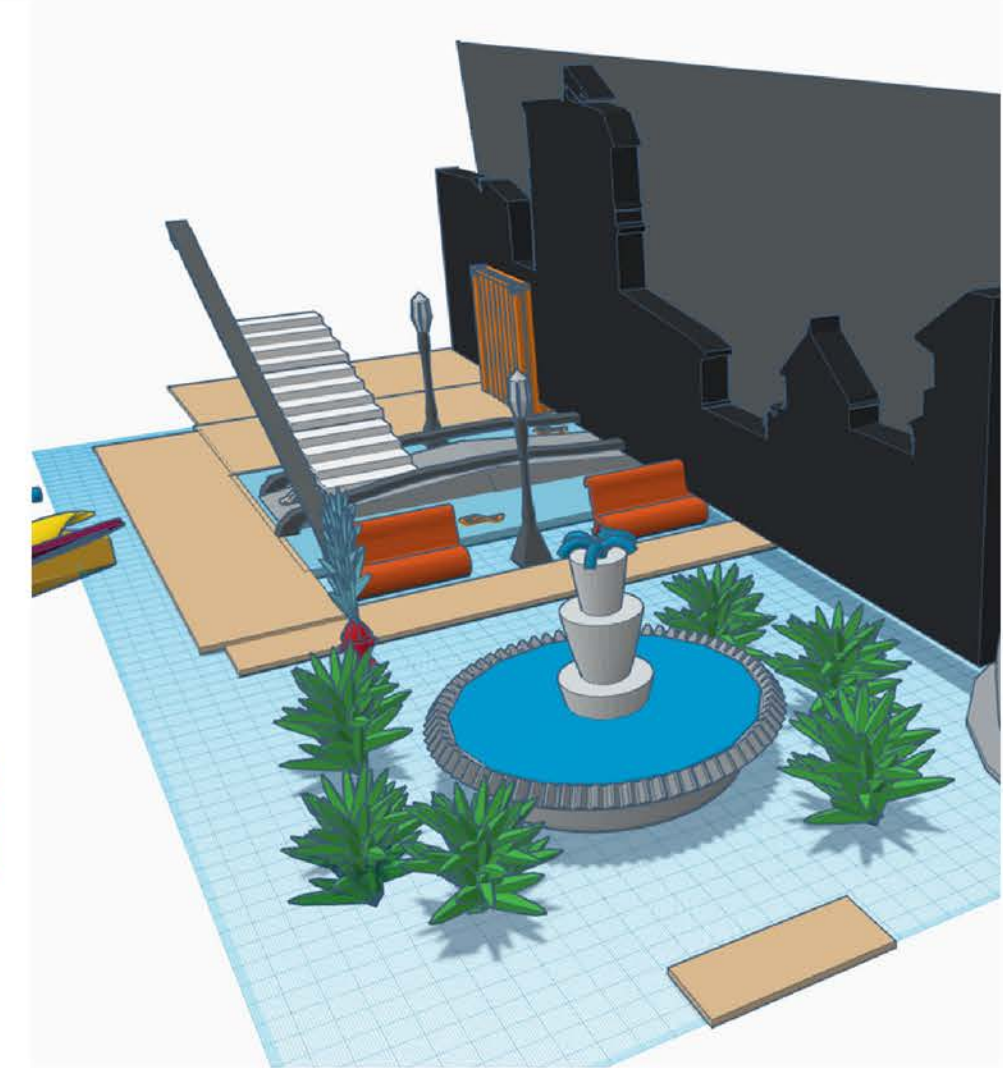
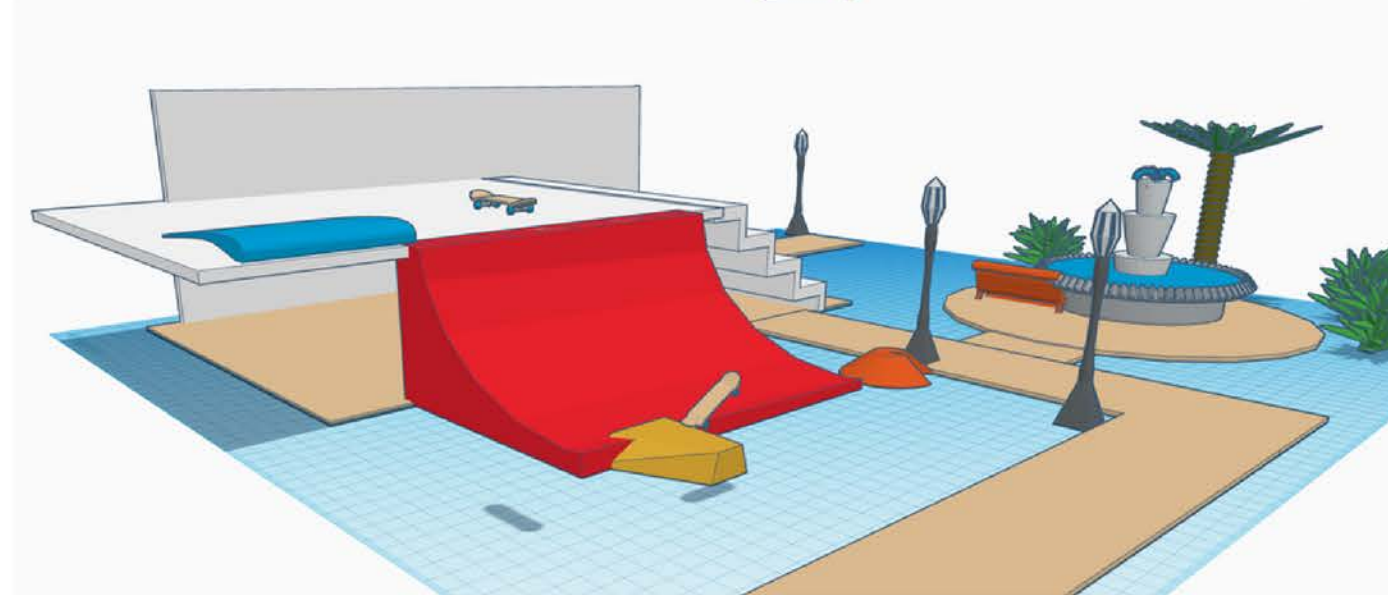
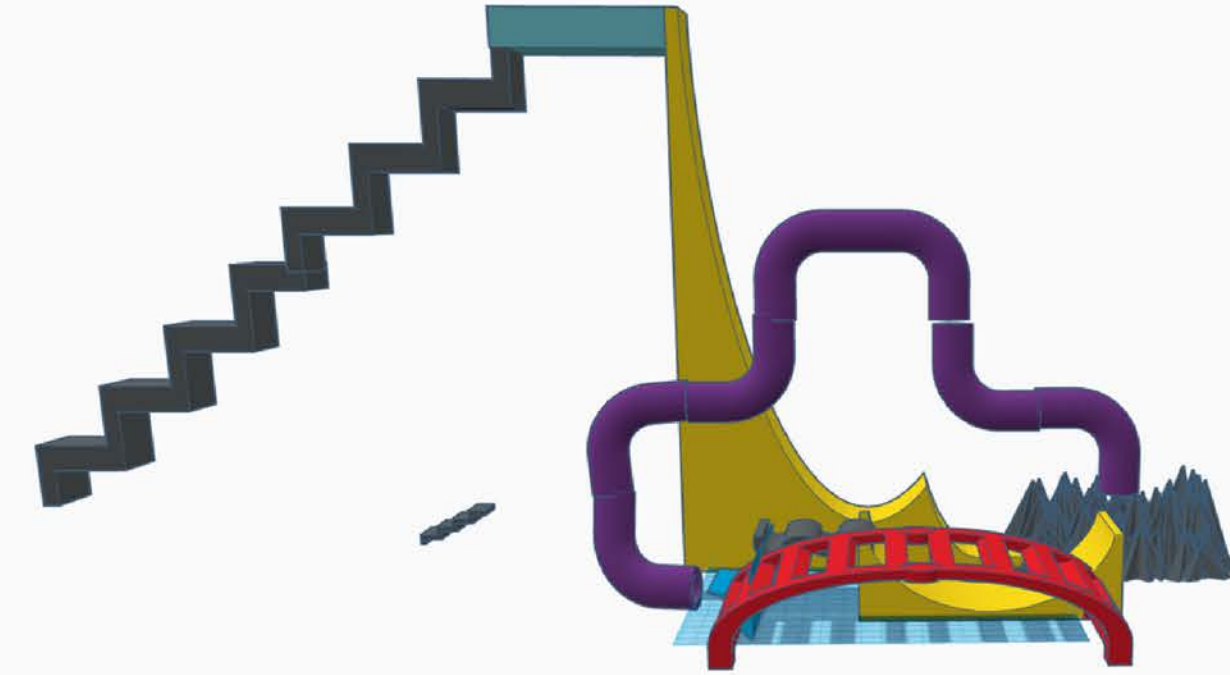


Top Photo GSES Media

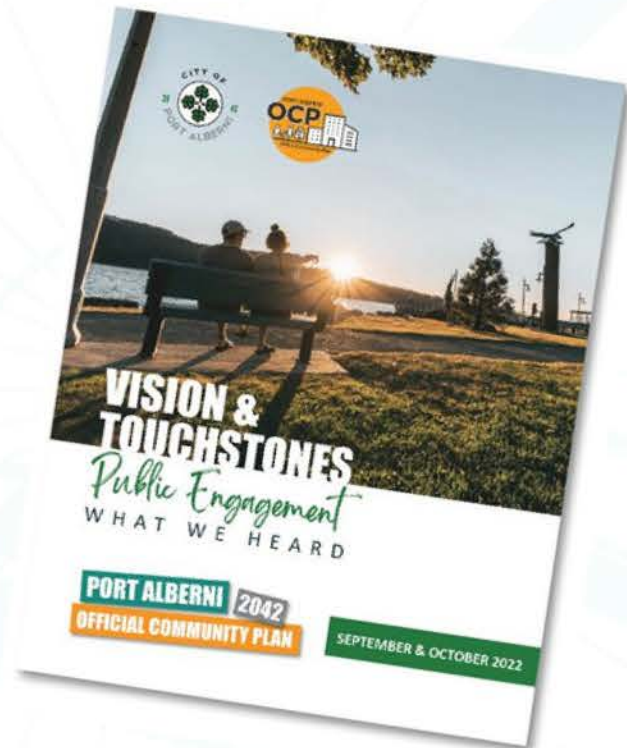


Local Designs

Gr.5/6/7 Applied Design, Skills & Technology students,
St. John Paul II Elementary School. Teacher: Mrs. Oosterhuis



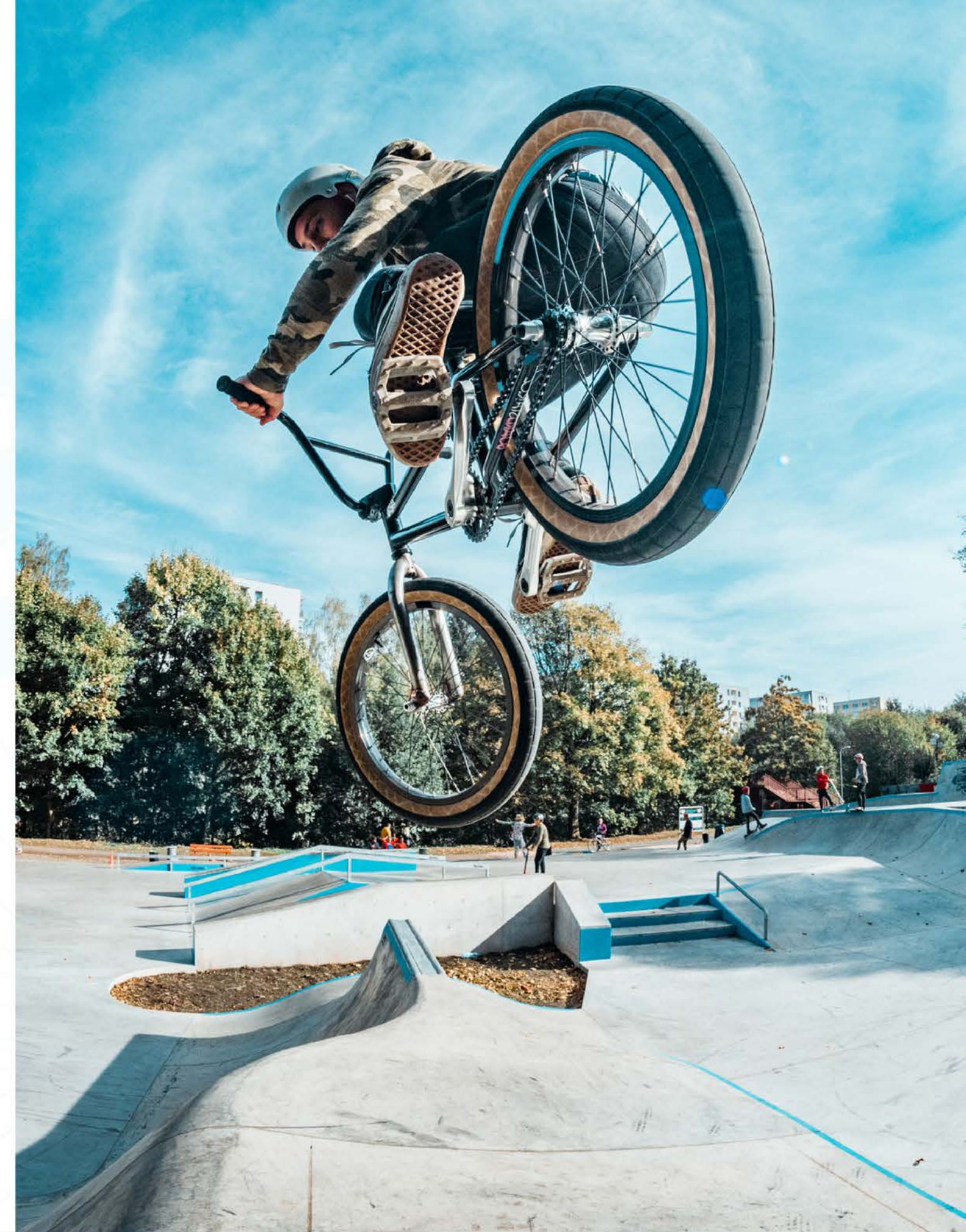
Meeting the Need



59

What we heard

- *Be clearer about the types of parks and recreation needed in Port Alberni. A new pool, soccer fields and skate park are top of mind for respondents*



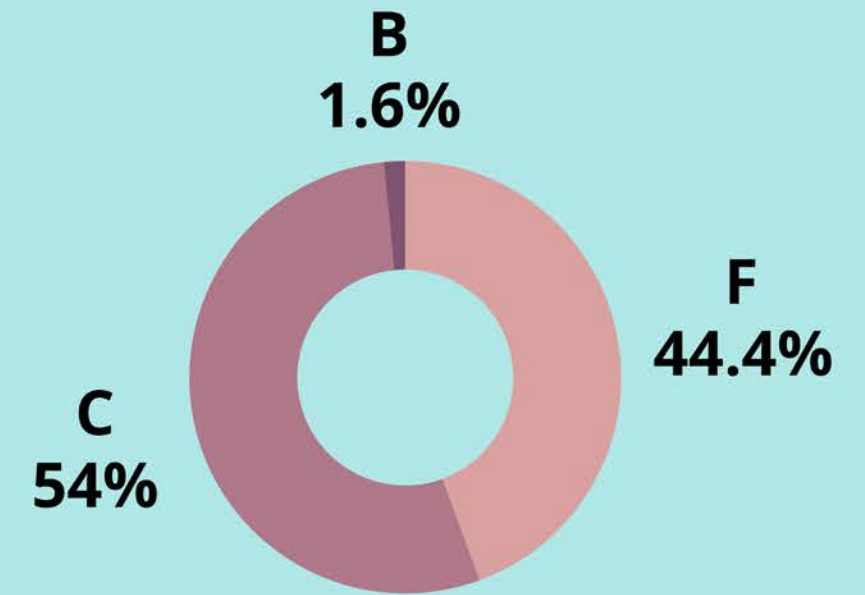
Our Skateboard Park



Note: Handmade addition brought by a park user



"What letter grade would you give the current park?"



Meeting the Need

✓ 1. Respond to demographic change / improve quality of life

- Creates recreation infrastructure used by families and young professionals
- Supports intergenerational participation (guardians with children)
- Creates a compelling reason for families to stay and/or relocate

2021 CENSUS

8,995

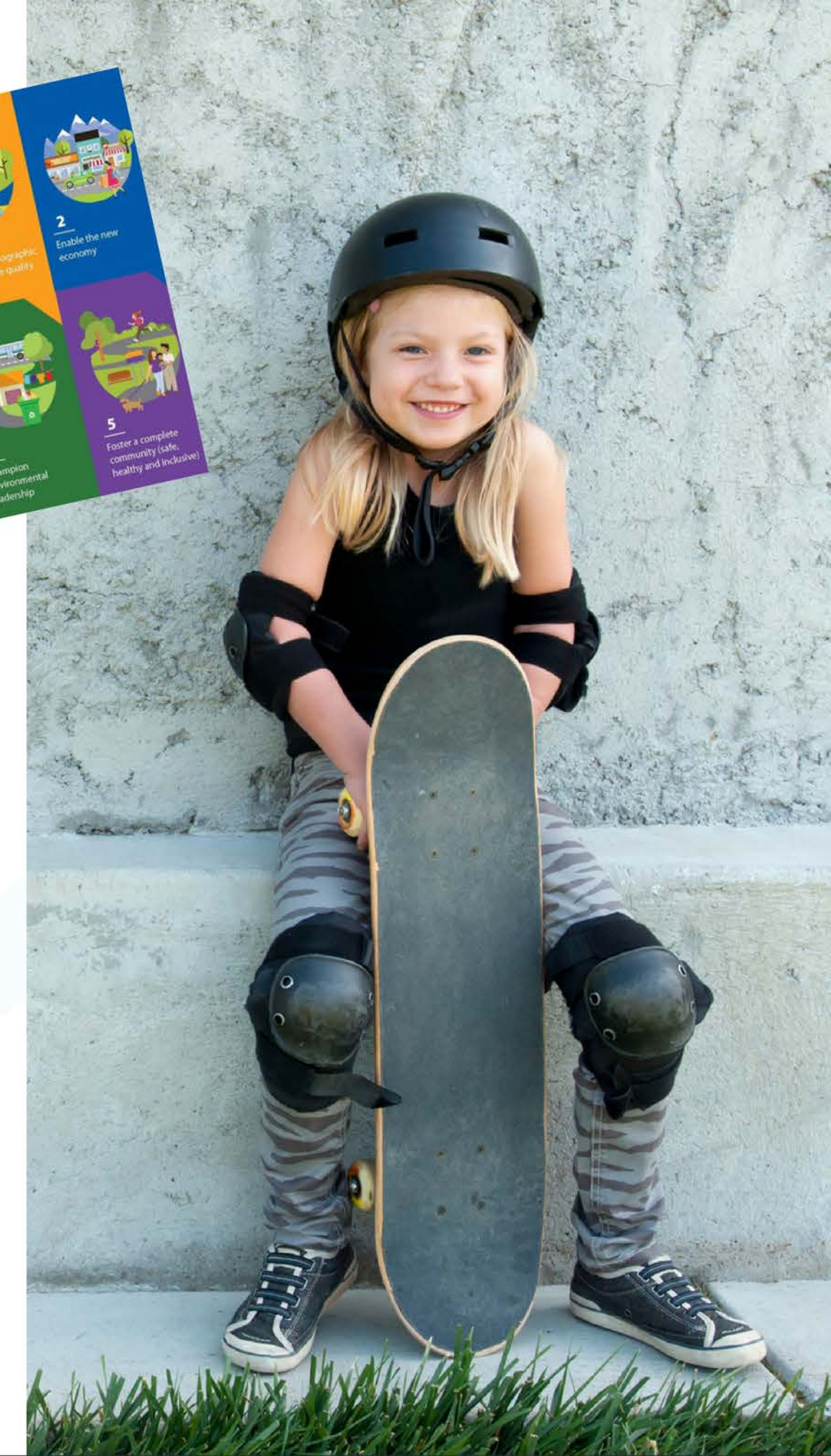
Residents aged 5-39

35%

Portion of total population

↑ +20%

Increase since 2016



Meeting the Need



2. Enables the new economy

- Creates a regional attraction in the outdoor recreational/tourism sector
- Encourages longer visitation than a 'fuel-up'
- Encourages trail usage
- Supports local businesses that supply the recreation market
- Creates a 'hot spot' in the west coast outdoor recreation network
- Opportunity to host events, competitions and skills programs



Meeting the Need



3. Provides and maintains quality services

- Resolves previously-identified needs
- Encourages future use/development of MTB trails
- Opportunity to incorporate artistic and heritage design elements
- Opportunity for recreational programming

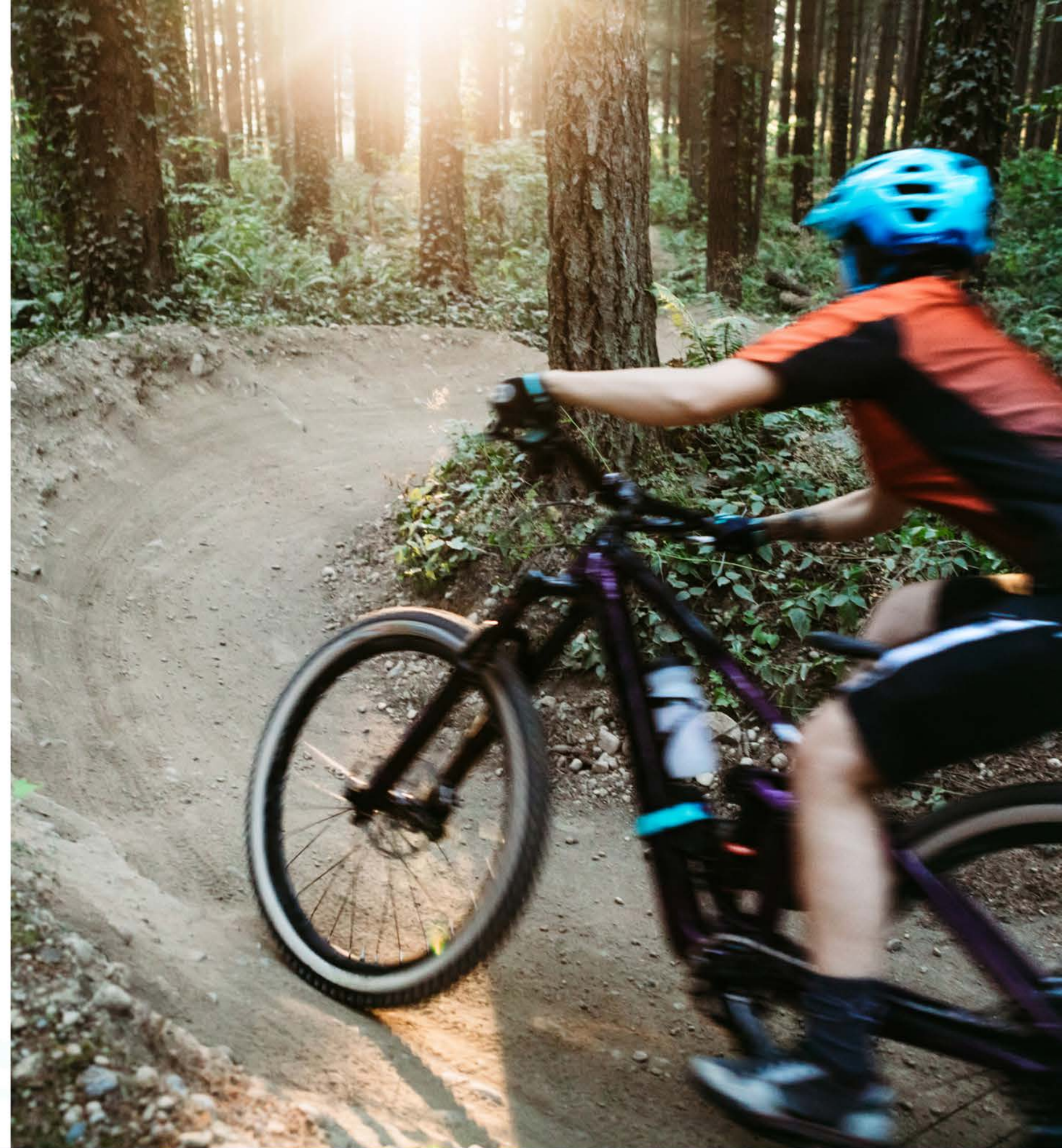


Meeting the Need



4. Champions environmental leadership

- Park construction has a low environmental impact
- Low demand on utilities
- Low ongoing maintenance
- Encourages new and continued trail use
- Integrates with the existing multi-modal pathways in the Echo neighbourhood



Meeting the Need



5. Fosters a complete community (safe, healthy and inclusive)

- A point of pride in the community
- A community gathering place
- Healthy activity for young people
- All-wheels friendly
- Safe location for youngest participants
- No cost to participate
- New sports to try
- An alternative to competitive team sports
- All-season activities



Personal Development

- Focus
- Patience
- Dedication
- Self-discipline
- Goal-setting
- Creativity
- Self-motivation
- Learning from failure
- Persevering through setbacks
- Pride from accomplishment

